

ArcGIS Web Map



11/1/2019, 3:56:31 PM

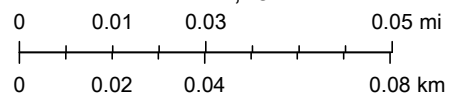
1:2,257

Railroad Center Lines

- Burlington Northern Santa Fe
- CP Rail
- Spur Track
- Parcels

Owner Label

- County Boundaries
- City and Village Limits
- County & Town Roads
- Federal & State Roads

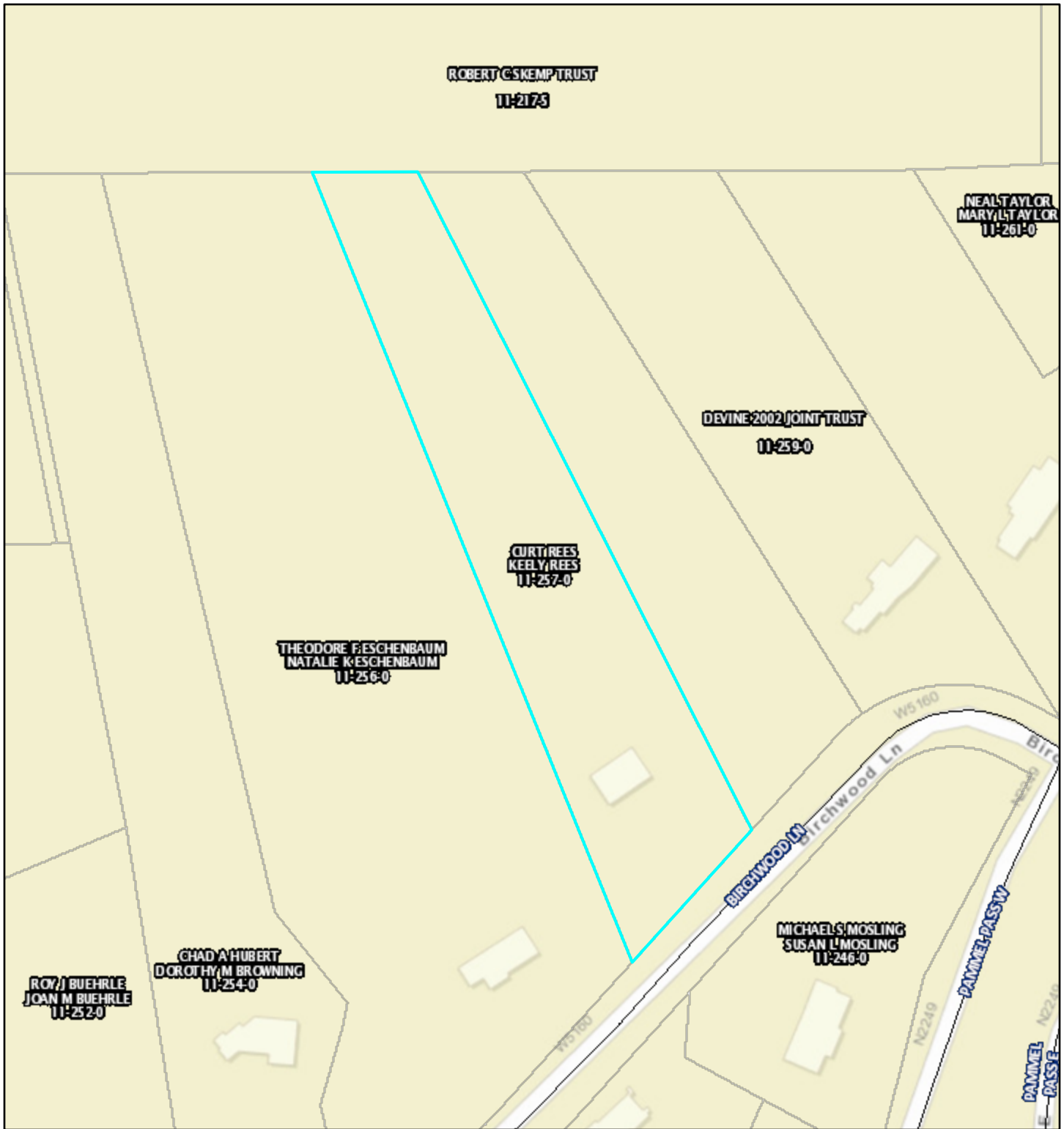


La Crosse County, WI, Source: Esri, DigitalGlobe, GeoEye, Earthstar Geographics, CNES/Airbus DS, USDA, USGS, AeroGRID, IGN, and the GIS User Community, La Crosse County

Web AppBuilder for ArcGIS

Representative Fraction (RF) or Natural Scale: 1:1200 (this is the same as 1/1200) The RF says that 1 of any measurement on the map equals 1200 of the same measurement on the original surface;

ArcGIS Web Map



11/1/2019, 3:58:17 PM

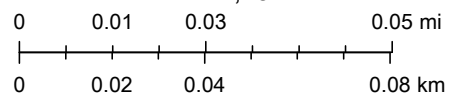
1:2,257

Railroad Center Lines

- Burlington Northern Santa Fe
- CP Rail
- Spur Track
- Parcels

Owner Label

- County Boundaries
- City and Village Limits
- County & Town Roads
- Federal & State Roads



La Crosse County, WI. Sources: Esri, HERE, Garmin, USGS, Intermap, INCREMENT P, NRCan, Esri Japan, METI, Esri China (Hong Kong), Esri Korea, Esri (Thailand), NGCC, (c) OpenStreetMap contributors, and the GIS User Community, La Crosse County

Web AppBuilder for ArcGIS

Representative Fraction (RF) or Natural Scale: 1:1200 (this is the same as 1/1200) The RF says that 1 of any measurement on the map equals 1200 of the same measurement on the original surface.